

**New Guild Exhibit at The National Museum of Transportation, St Louis MO
December 2, 2021 F. Bloemke, R. Cass, J. Marasa, Andy Kram, G. Simone**



Figure 1. Wall mounted Guild exhibit in background (right) with glass cabinet in background (left) and Santa Claus & Christmas display in foreground.

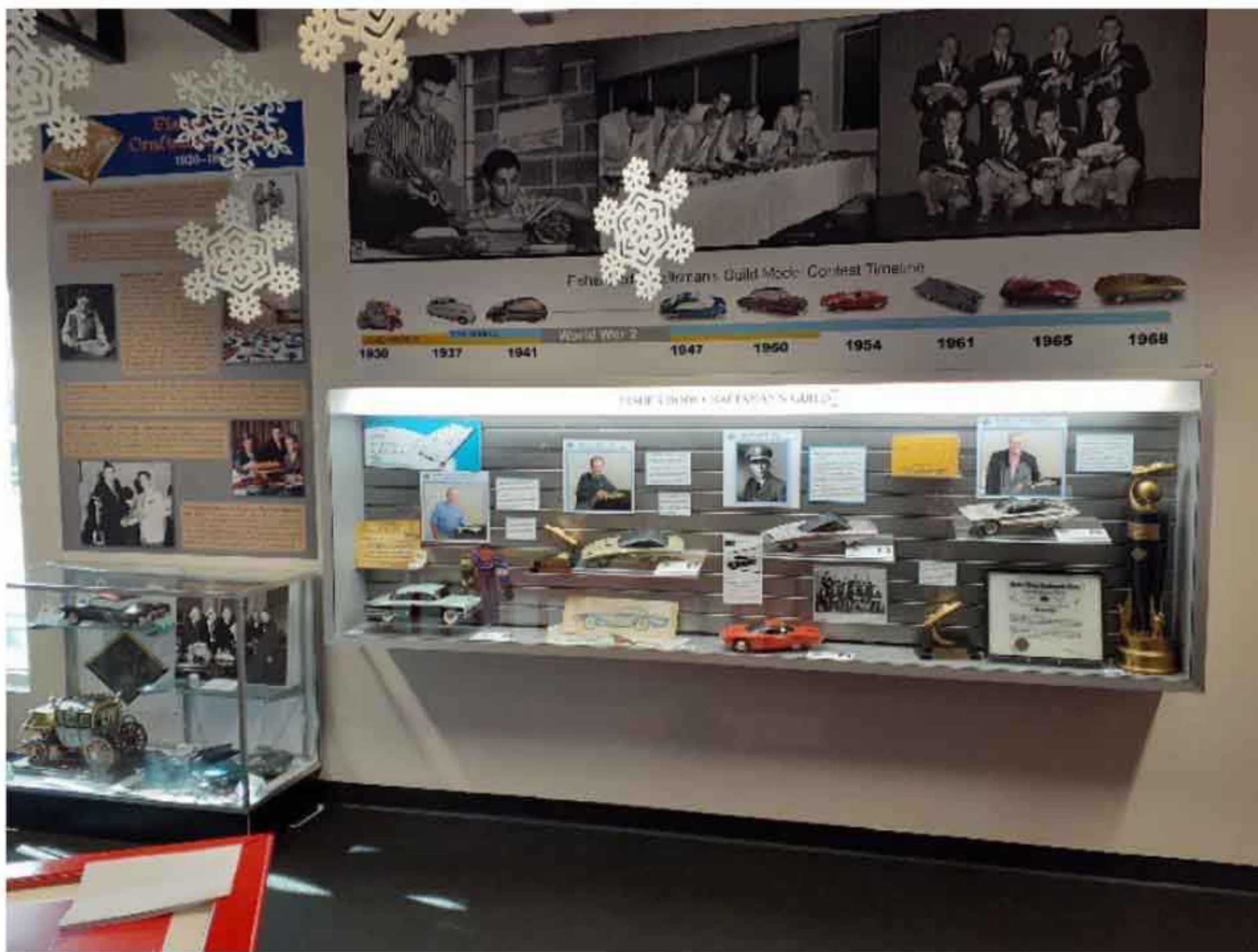


Figure 2. Closer view of Guild display with bold print descriptions (left) and large graphics (upper right). Note model “styling” timeline.

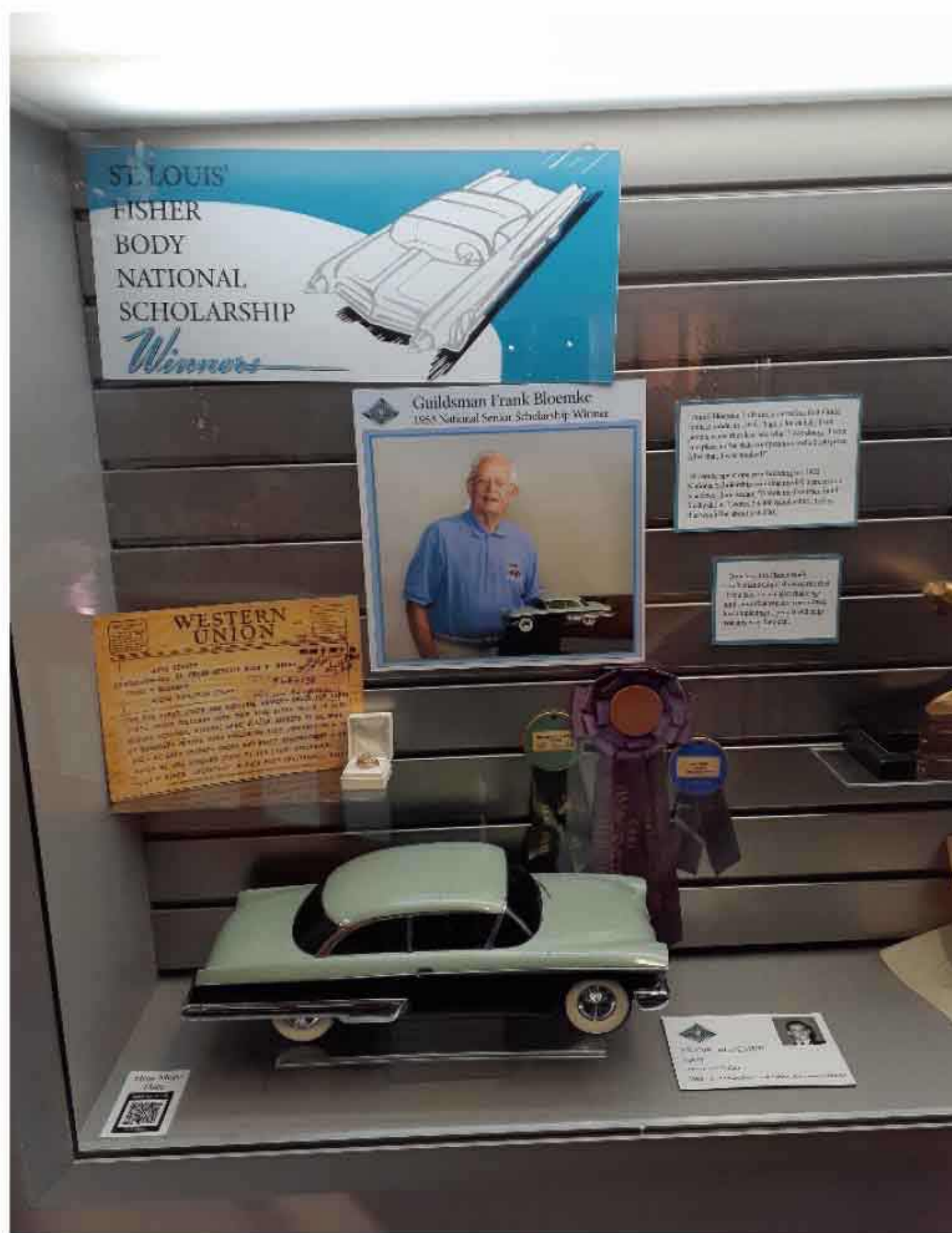


Figure 3. This area dedicated to Frank Bloemke 1953 national winner from St. Louis and museum volunteer who helped coordinate the display.



Figure 4. Glass display case with Napoleonic Coach donated by the Radl Family of New Jersey and Gerald Simone's 1958 Styling scholarship winner (black with dual windshields).



Figure 5. Area of display dedicated to John Marasa’s memorabilia. 1961 national winner from St. Louis, MO.



Figure 6. Area of display dedicated to Harold “Andy” Kram 1958 Regional, 1959 Styling and 1962 national winner from St. Louis, MO.

FISHER BODY C



Figure 7. Area of display dedicated to Robert Cass 1960 national scholarship winner from St. Louis MO.